



**Remote access  
as it should be**



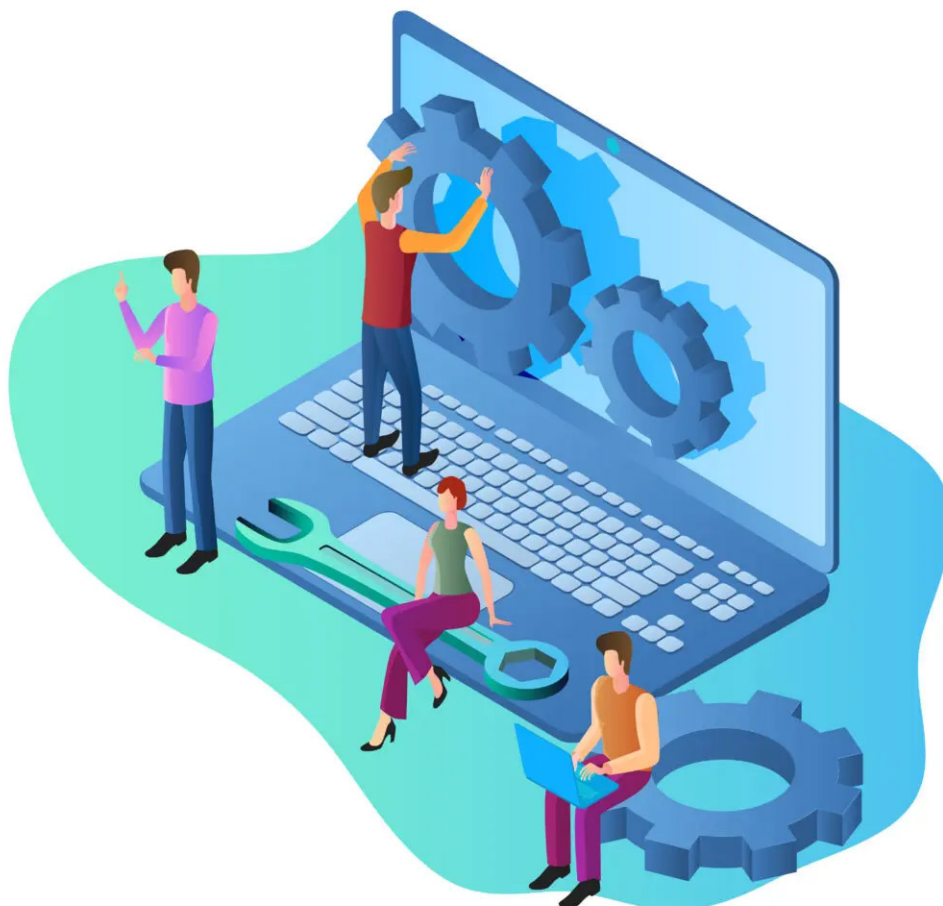
# NO LIMITS

## Expand the reach of your IT and OT professionals

Scaling organizations is a tough job for modern leaders. Either you're juggling with the constant lack of qualified talent or trying to solve the eternal budget puzzle. Sending support personnel on the road does not align with efficiency targets, CO2 quotes, or the bottom line.

With Zero Trust Access, you can reduce the need for on-site travel while increasing your valued expert's freedom to solve their tasks from the comfort of their chair. You'll expand your company's market reach while saving valuable resources and prolonging the life of the technology across the organization.

**The result? Satisfied customers, happy employees, and healthy profits**





## The safest choice is Offline...

As your organization grows, cyber threats increase. More devices are connected to the internet, and partners and vendors constantly seek approval for different remote access solutions. When deadlines are closing, operational personnel often invent quick workarounds to the organization's safety measures.

Zero Trust Access reduces friction without compromising security. Eliminate risk by separating remote access from the company network. Authorize momentary access via an Out-of-band 4G connection and watch how issues get solved while the equipment is kept offline.

**You'll save valuable time while raising security and convenience across your organization.**



# No matter the industry

## OEM, asset owner or service provider?

**Original Equipment Manufacturers (OEMs)**, who support customers worldwide, need instant access to support and configure their equipment. BifrostConnect allows you to be always on-site.

**Asset owners**, who require 'round the clock operations or have critical equipment, cannot wait for assistance. BifrostConnect provides instant access to third-party expert assistance and keeps your operations running.

**Service providers** deliver ease of operation and fast fixes to their client's problems. BifrostConnect allows service providers to be constantly present to resolve issues.



# Take control

## Reduce downtime and improve business operation

Reach any type of IT/OT equipment even if it is offline, on a closed network, requires BIOS access during the boot process, or requires a terminal session via a serial connection.

Grant Specialists (Internal/External) temporary access to critical equipment without ever placing them on the network or exposing the equipment to the internet.

## Place the right specialist in front of the issue – instantly

By reducing time to fix, on-site visits and support related travel/freight expenses, we aim to enable IT and OT professionals to boost service levels and offer convenient and secure support during every step of the support cycle.

- Configure and set-up new devices out of the box
- Support and service any type of device remotely
- Reduce your emergency response time with remote hardware diagnostics





## **Biotech company using BifrostConnect**

...enabling instant remote support to ensure operational efficiency and business continuity.

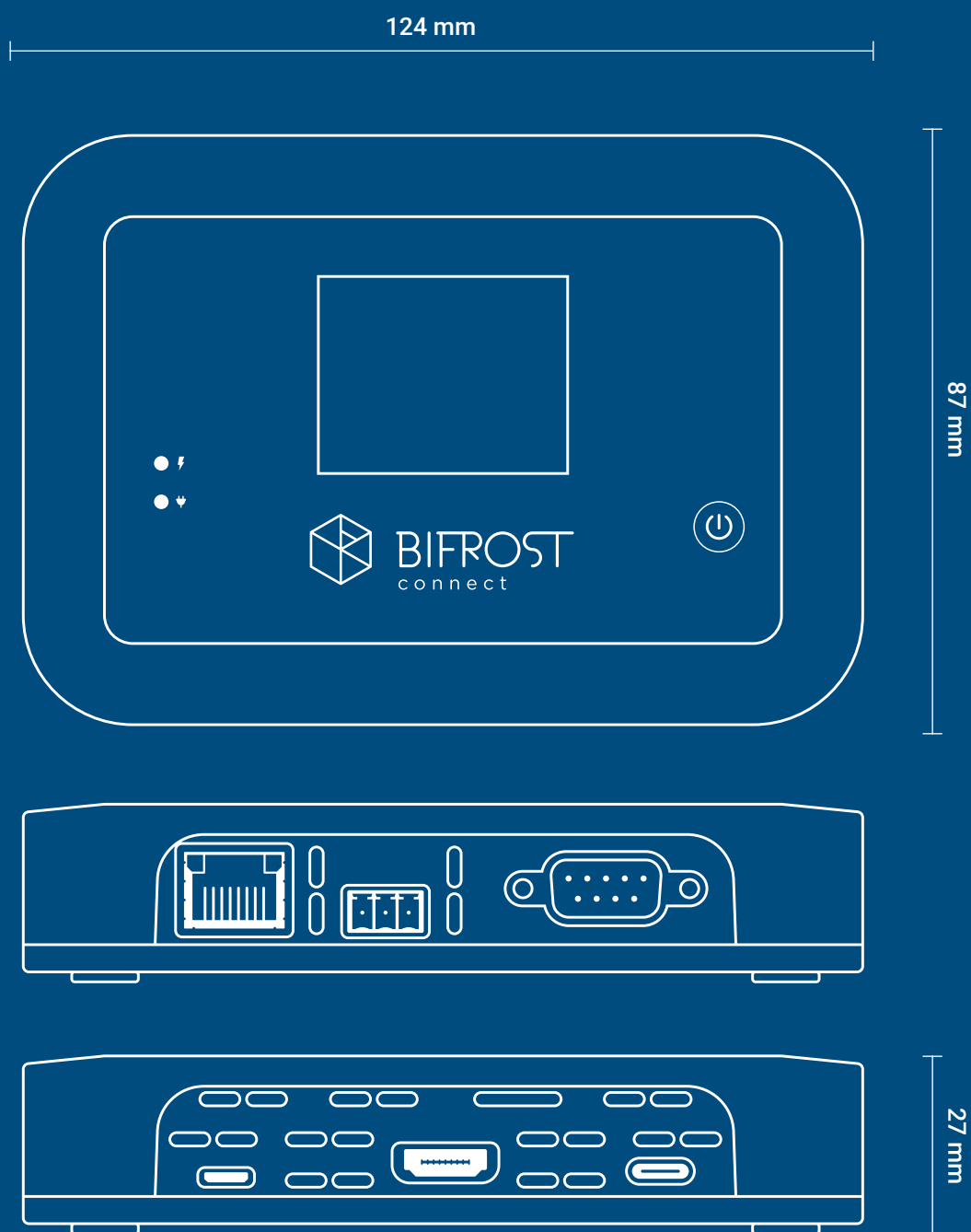
## **Advanced production using BifrostConnect**

...enabling experts to work directly on offline equipment, as if you were in-front yourself.





**If you are looking at this in printed form, you are looking at the BifrostConnects true dimensions.**





# BifrostConnect Unit

We know you love a good specsheet

---

## I/O

### USB-C

Video input, keyboard/mouse output and charging

### Micro-USB

Keyboard/mouse output and charging

### Ethernet RJ45

Network (POE) and charging

### RS232

Terminal session

### SPDT

Power relay

### Bluetooth 4.0

Keyboard/mouse input

### HDMI

Video input up to 1080p @60Hz

### SIM tray

Nano-SIM

---

## Battery

### Type

Industrial RRC1120 (1S1P)

### Power

3.70V / 2,000mAh / 7.4Wh,  
<2 hours battery operating time

---

## General info

### Data channel

Encrypted WebRTC via MQTT

### OS

Industrial Linux  
Upgrades OTA

### Humidity and temperature

Max. 85% non-condensing  
relative humidity  
41°-104°F (5°-40°C)

### Connectivity

Built-in LAN, WIFI, LTE (3G and 4G)





# BifrostConnect Services

---

## BifrostConnect Authenticator

**Just-in-Time Access:** The solution allows temporary access to a device, increasing security by limiting the time that the device is accessible.

**Attended Access Auth (OTP):** The Remote Operator must obtain a Time-based one-time password from an on-site user to gain access to the device, adding an extra layer of security.

**Unattended Access Auth (MFA):** Multi-factor authentication is used to secure unattended access to the device.

**SAML Integration:** The solution can integrate with Security Assertion Markup Language (SAML) for single sign-on (SSO) and identity management.

---

## BifrostConnect Bridge

**Peer-to-peer Tunnel Sessions:** Secure IP or Serial communication between two devices - without VPN tunneling - allowing for remote access and data transfer without compromising perimeter security.

**KVM Remote Desktop Sessions:** Remote Keyboard Video and Mouse control, ensuring that all data is processed on the on-site device and that data never leaves the company perimeter.

**Terminal/Serial Sessions:** Remote Console Access to the terminal through RS232 or Console connection.

**SSH Sessions:** Remote Access to devices via the Secure Shell (SSH) protocol.

---

## BifrostConnect Manager

**Granular Access Management:** Fine-grained control granting differing access levels to particular users at particular endpoints. Granular Access determines what a user is authorized to do in a system and prevents tampering, leaking, or otherwise malicious use of privileged information.

**Audit logging & SIEM Integration:** Extensive logging and integration with security information and event management (SIEM) systems, allowing for better visibility and security management.



# Zero trust by design

## Safeguard sensitive assets while ensuring internal and 3<sup>rd</sup> party availability.

### **Air-gapped Communication**

Establish an Air-gapped communication between IT/OT equipment – without VPN tunneling – so your perimeter security can remain intact. Provide secure Out-of-Band access and apply End-to-End encryption for every session.

### **Robust Access Management**

Ensure that devices are only accessible on demand and that 2FA or SAML authentication is required. Allow admins to apply the least privilege and granular permissions to define how technicians, 3rd parties, and remote systems interact. Choose whether you want to limit access to one single IP and Port or a

- Alternative to VPN, KVM and RDS
- Momentary access
- Authenticate via One-Time Passwords
- Out-of-band LTE Connectivity

network of multiple IPs and Ports. Support Attended Access: The end-user receiving support must establish connectivity and verify the session. Support Unattended Access: The privileged remote operator can establish access without relying on on-site personnel.

### **Audit logging**

Monitor and document activities across your organization. Streamline your reporting with an extended audit trail that integrates directly with your preferred SIEM solution.

- No software installations
- Equipment remains offline
- Keep 3<sup>rd</sup> party specialist off your network
- Works out of the box



# Born in Scandinavia



BifrostConnect is a Danish tech company established in 2018. Our Remote Access solution is designed, manufactured, and assembled in Scandinavia to maintain strict security- and quality control.



Our mission? To securely bridge the gap between people and technology - No Limits! Remote Access as it should be.



## Contact us

Digevej 114  
2300, Copenhagen  
Denmark

 +45 70 60 20 56  
 [hi@bifrostconnect.com](mailto:hi@bifrostconnect.com)

 [linkedin.com/company/bifrostconnect/](https://www.linkedin.com/company/bifrostconnect/)  
 [www.bifrostconnect.com](http://www.bifrostconnect.com)